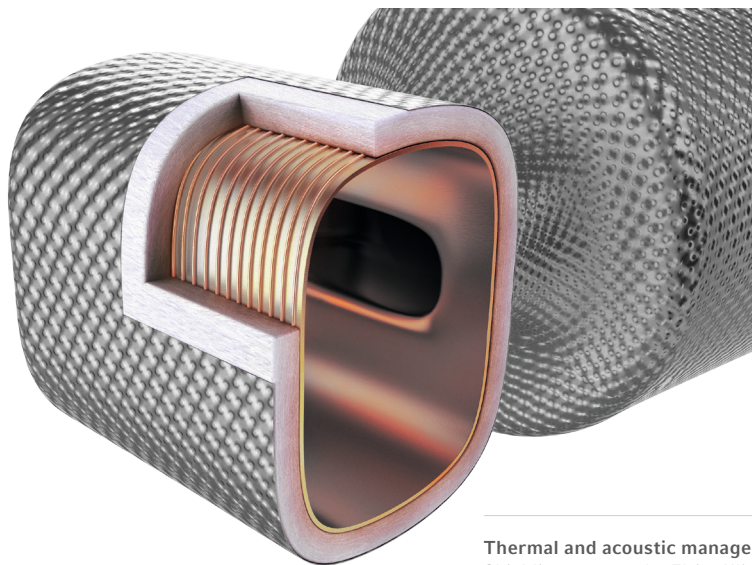


FACT SHEET

# ElroActive™

ElroActive™ is an thermal conditioning system for exhaust (aftertreatment) components of conventional and, in particular, electrified powertrains. The system helps to activate exhaust components earlier and increases the total conversion efficiency of aftertreatment components.



Thermal and acoustic management for the entire vehicle  
Shielding systems by ElringKlinger

## Technology

- + (Pre-) Heating for earlier functional exhaust aftertreatment (addressing cold starts)
- + Maintaining thermal conditions (e.g. keeping temperature level at stop/start phases)
- + Increased efficiency of catalysts via surface heating in low-load operation

### STANDARD CARRIER LAYER MATERIALS

- + Stainless steel
- + FAL
- + Aluminum

### INSULATION FUNCTIONS

- + ElroTherm VG
- + ElroTherm VCG
- + ElroTherm V

### OPTIONS

- + Sound design for additional NVH benefits

### WORKING TEMPERATURE

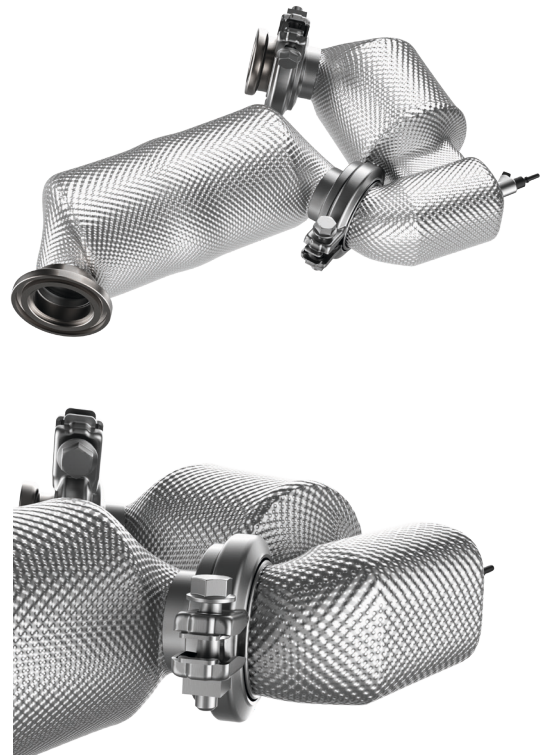
- + Maximum 900°C

### MATERIAL STRUCTURE

- + Metallic Layer with fiber material insulation & heating wire system

# Benefits

- + Possibility to reduce  $\text{NO}_x$  /  $\text{CO}_2$  Trade-off
- + Potential reduction of more than 50%  $\text{NO}_x$  (Euro 6 Diesel passenger cars) possible
- + Faster achievement of urea injection temperatures in diesel applications
- + Significant reduction of urea deposits
- + Flexibility with respect to complex geometric boundary conditions
- + Cascaded operation possible (e.g. different power levels along the exhaust systems or depending on the operating scenario)
- + Integration in convention shielding systems possible
- + Retrofitting of existing exhaust systems (Euro 6)
- + Cost-optimized option for reaching future emission limits



## ELRINGKLINGER – YOUR PARTNER FOR SHIELDING SYSTEMS

Product Development (Design, Engineering and Simulation) – Validation & Testing – Tool Shop –  
Prototype Shop – Series Production

## YOUR CONTACT

ElringKlinger AG  
Phone +49 7123 724-0  
E-mail [info@elringklinger.com](mailto:info@elringklinger.com)

ElringKlinger AG | Max-Eyth-Straße 2 | 72581 Dettingen/Erms | Germany  
[www.elringklinger.com](http://www.elringklinger.com)

The information provided in this document is the result of technological analyses and may be subject to changes depending on the design of the system. We reserve the right to make technical changes and improvements. The information is not binding and does not represent warranted characteristics. We do not recognize any claims for compensation based on this information. We accept no liability for printing errors.



08/23