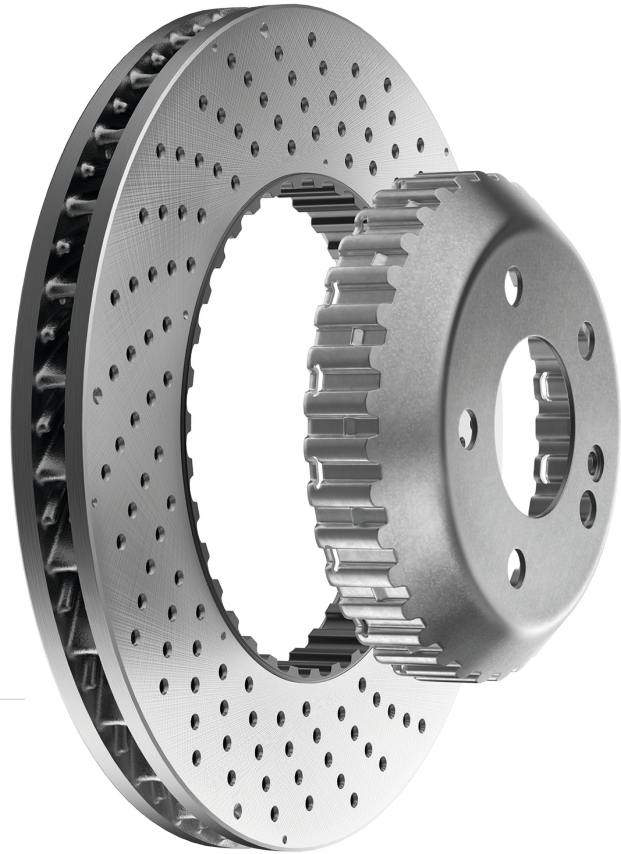


FACT SHEET

# Brake disc carrier



**Powerful and resilient**  
Brake disc carriers made by ElringKlinger

**Brake systems are exposed to high mechanical and thermal loads as well as a very wide range of environmental influences.**

Multi-part brake discs are accommodated by a brake disc carrier and connected to the vehicle axle. ElringKlinger brake disc carriers, which are formed sheet-metal parts, are used primarily

for high-performance brake applications. They are characterized by a high level of functional reliability, light weight, and optimal mechanical stability for high braking forces and torques.



## ELRINGKLINGER – YOUR PARTNER FOR BRAKE DISC CARRIERS

Product Development (Design, Engineering and Simulation) – Process Development – Tool Shop –  
Tool Sampling/Prototyping – Testing – Change-Management – Series Production – Part Measurement

# Technology

## FORMED SHEET-METAL PART

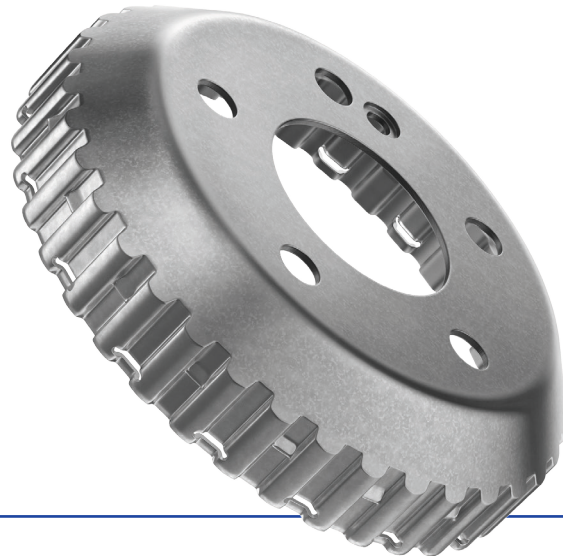
- + High strength and maximum precision
- + Transmission of higher torques possible
- + Standard materials and standard sheet sizes

# Parameters

- + From standard to high wall thicknesses with > 5 mm possible
- + Platine sizes up to > 600 x 600 mm possible
- + Wide material range: S420, S355, DC04, ...

# Benefits

- + Torques up to 7,000 Nm and above
- + Substitution of complex casted part  
→ Weight reduction up to 30%
- + Commercial benefit compared to casting
- + Wide material range
- + Improved thermal decoupling of brake disc and axle
- + Mechanical isolation leads to acoustic benefits
- + Strain hardening increases stability
- + Standard sheet metal formed to tooth pitch for brake disc connection
- + Further possibilities for integration of recuperations aspects



## YOUR CONTACT

ElringKlinger AG  
Phone +49 7123 724-0  
E-mail [info@elringklinger.com](mailto:info@elringklinger.com)

ElringKlinger AG | Max-Eyth-Straße 2 | 72581 Dettingen/Erms | Germany  
[www.elringklinger.com](http://www.elringklinger.com)

The information provided in this document is the result of technological analyses and may be subject to changes depending on the design of the system. We reserve the right to make technical changes and improvements. The information is not binding and does not represent warranted characteristics. We do not recognize any claims for compensation based on this information. We accept no liability for printing errors.



08/23